

Equator, Hemispheres, Tropics and Poles



Divisions of the Earth

The Earth can be divided in many ways.

Today, we will learn about five important divisions on the planet:

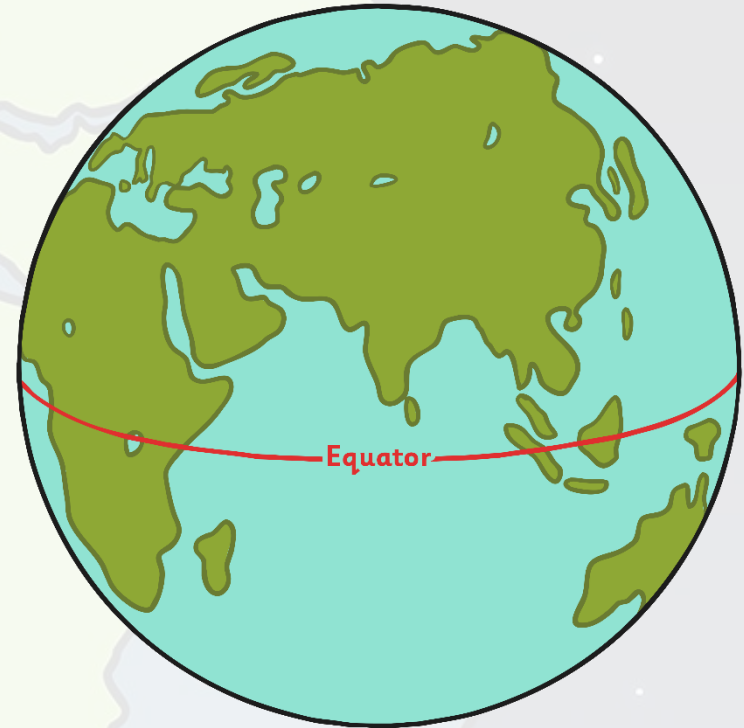
- equator
- Northern Hemisphere
- Southern Hemisphere
- North Pole
- South Pole



Let's find out more!

Equator

- The equator is an imaginary line that divides the Earth in half.
- The equator is an equal distance between the North and South Poles.
- The weather on the equator is hot all year round.
- At the equator, day and night are both 12 hours long.



Did You Know?

Although the weather is generally hot, there is a mountain on the equator where you can ski!

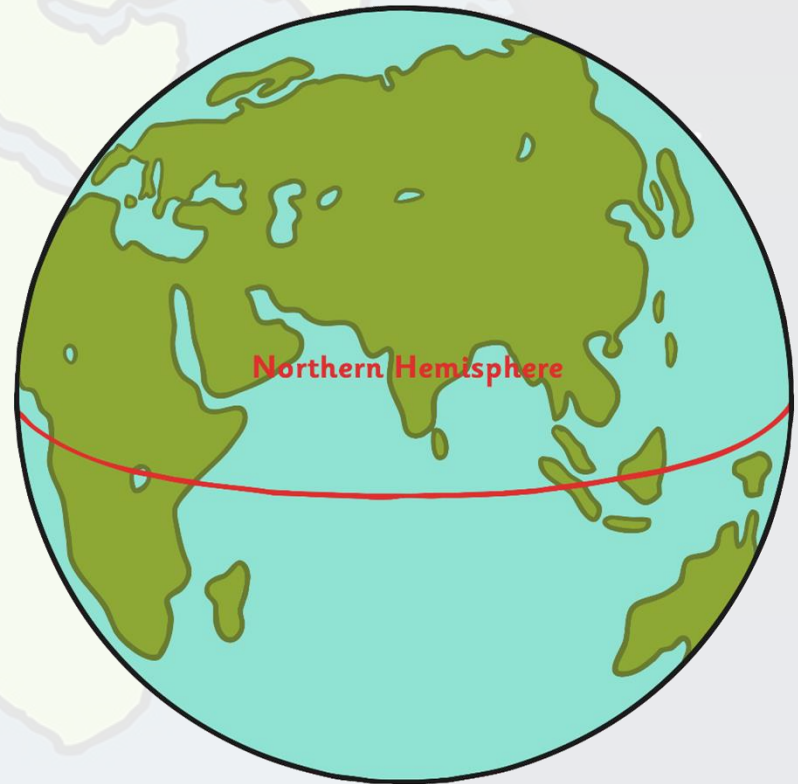
Challenge Question

Why do you think places at the equator are hot?



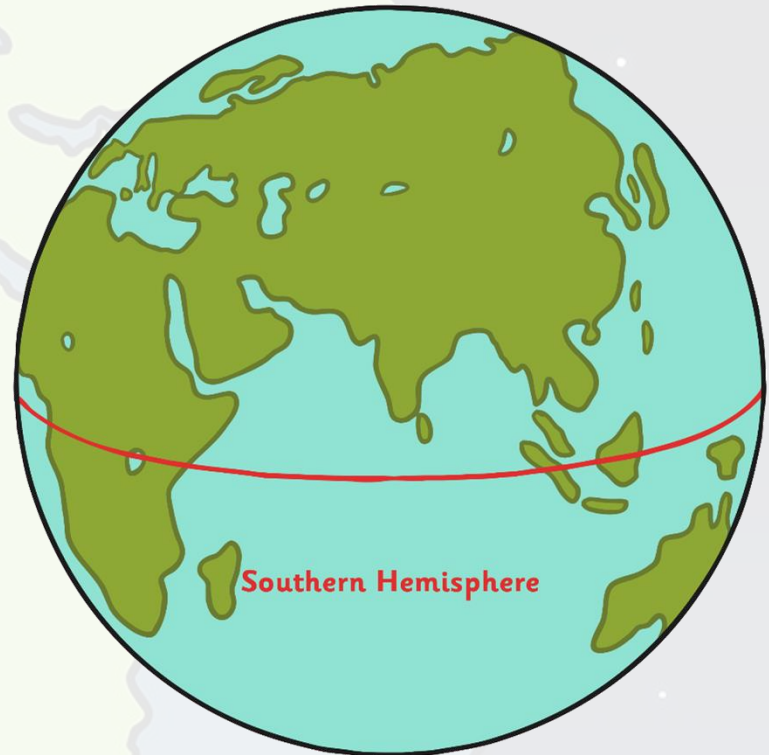
Northern Hemisphere

- The part of the Earth north of the equator is called the Northern Hemisphere.
- 80% of the world's population lives in the Northern Hemisphere.
- 90% of land is in the Northern Hemisphere.
- The Northern Hemisphere includes all of north America, Europe and most of Asia and Africa.



Southern Hemisphere

- The part of the Earth south of the equator is called the Southern Hemisphere.
- Only 20% of the world's population lives in the Southern Hemisphere.
- 90% of the planet's water is in the Southern Hemisphere.
- The Southern Hemisphere includes all of Australia, Antarctica and most of South America.

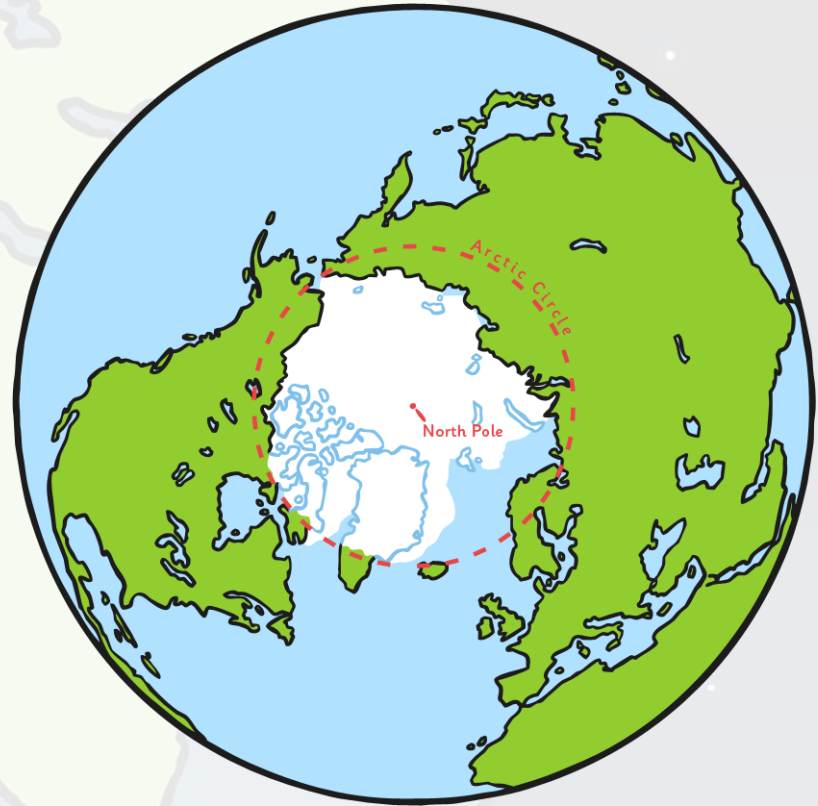


Did You Know?

When it is winter in the Southern Hemisphere, it is summer in the Northern Hemisphere!

North Pole

- The North Pole is the northernmost point on Earth.
- There is no land at the North Pole, only ice. The ice is about three metres thick.
- In summer, the sun never sets.



Did You Know?

At the North Pole, no matter which way you point, you will always face south!

South Pole

- The South Pole is the southernmost place on Earth.
- The South Pole is much colder than the North Pole.
- There is a scientific base at the South Pole where between 50 and 200 scientists live and work.



Did You Know?

The first person to reach the South Pole was also the first official person to reach the North Pole. His name was Roald Amundsen!

